

Designed: PJS
Drawn: JA
Checked: DRB
Job No.: 2400967
Date: Jan. 2019

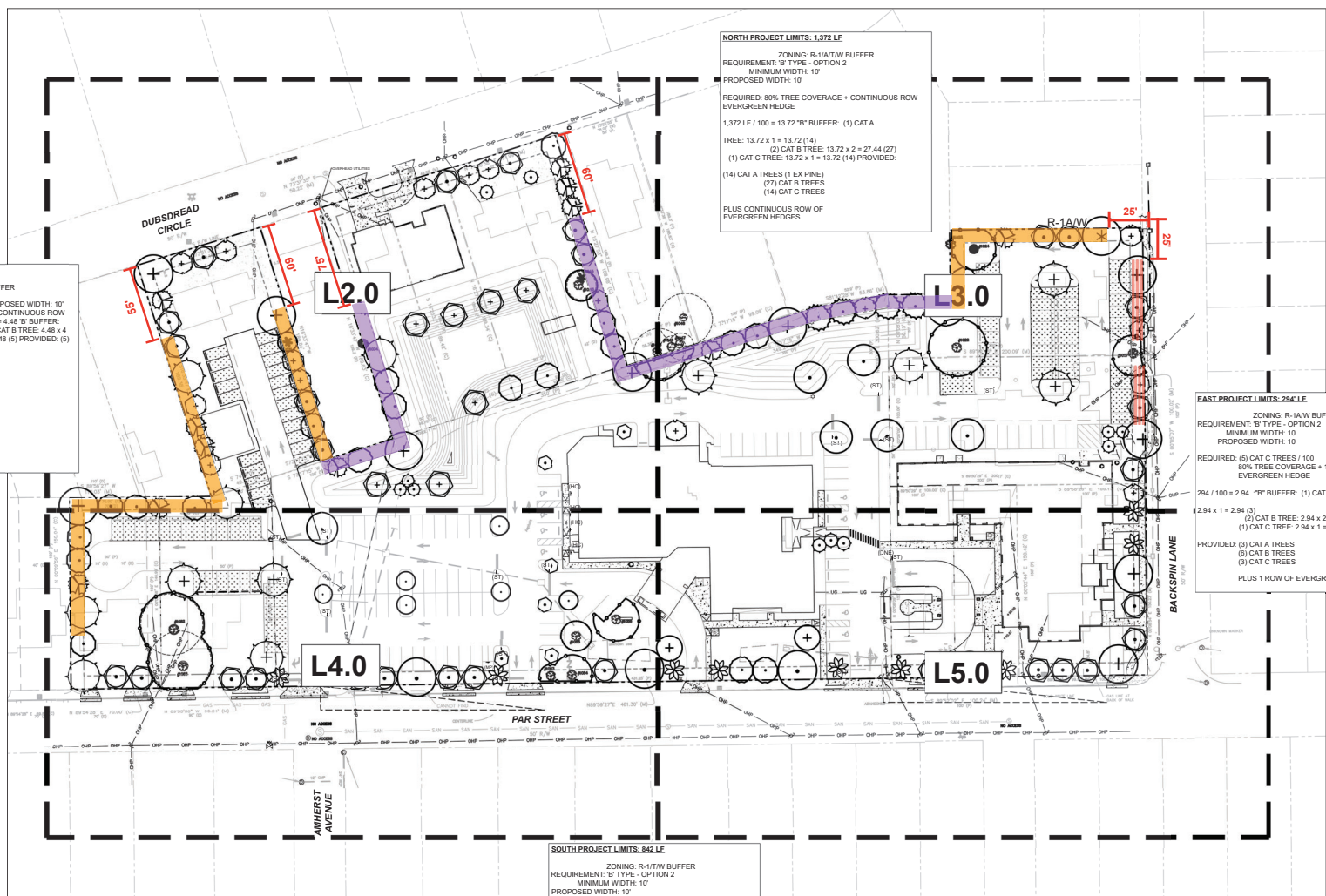
PRELIMINARY OVERALL LANDSCAPE PLAN
ST. PHILIP PHAN VAN MINH
CITY OF ORLANDO, FLORIDA

THIS SHEET NOT VALID FOR CONSTRUCTION UNLESS STAMPED APPROVED

Always call 811 two full business days before you dig
Sunshine 811.com
 www.sunshine811.com

THIS SHEET NOT VALID FOR CONSTRUCTION UNLESS COMPLETE SET OF PLANS SEE GENERAL NOTES FOR MASTER LEGEND

Sheet No.
L1.0



NORTH PROJECT LIMITS: 1,372 LF
 ZONING: R-1A/W BUFFER
 REQUIREMENT: 'B' TYPE - OPTION 2
 MINIMUM WIDTH: 10'
 PROPOSED WIDTH: 10'
 REQUIRED: 80% TREE COVERAGE + CONTINUOUS ROW EVERGREEN HEDGE
 1,372 LF / 100 = 13.72 "B" BUFFER: (1) CAT A
 TREE: 13.72 x 1 = 13.72 (14)
 (2) CAT B TREE: 13.72 x 2 = 27.44 (27)
 (1) CAT C TREE: 13.72 x 1 = 13.72 (14) PROVIDED:
 (14) CAT A TREES (1 EX PINE)
 (27) CAT B TREES
 (14) CAT C TREES
 PLUS CONTINUOUS ROW OF EVERGREEN HEDGES

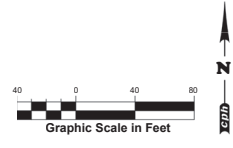
WEST PROJECT LIMITS: 448.92 LF
 ZONING: R-1A/W BUFFER
 REQUIREMENT: 'B' TYPE - OPTION 2
 MINIMUM WIDTH: 10'
 PROPOSED WIDTH: 10'
 REQUIRED: 80% TREE COVERAGE + CONTINUOUS ROW EVERGREEN HEDGE: 448.92 LF / 100 = 4.48 "B" BUFFER:
 (1) CAT A TREE: 4.48 x 1 = 4.48 (5) (2) CAT B TREE: 4.48 x 2 = 8.96 (9) (1) CAT C TREE: 4.48 x 1 = 4.48 (5) PROVIDED: (5) CAT A TREES (9) CAT B TREES
 (5) CAT C TREES
 PLUS CONTINUOUS ROW OF EVERGREEN HEDGES

EAST PROJECT LIMITS: 294 LF
 ZONING: R-1A/W BUFFER
 REQUIREMENT: 'B' TYPE - OPTION 2
 MINIMUM WIDTH: 10'
 PROPOSED WIDTH: 10'
 REQUIRED: (5) CAT C TREES / 100
 80% TREE COVERAGE + 1 ROW OF EVERGREEN HEDGE
 294 / 100 = 2.94 "B" BUFFER: (1) CAT A TREE:
 2.94 x 1 = 2.94 (3)
 (2) CAT B TREE: 2.94 x 2 = 5.88 (6)
 (1) CAT C TREE: 2.94 x 1 = 2.94 (3)
 PROVIDED: (3) CAT A TREES
 (6) CAT B TREES
 (3) CAT C TREES
 PLUS 1 ROW OF EVERGREEN HEDGES

SOUTH PROJECT LIMITS: 842 LF
 ZONING: R-1T/W BUFFER
 REQUIREMENT: 'B' TYPE - OPTION 2
 MINIMUM WIDTH: 10'
 PROPOSED WIDTH: 10'
 REQUIRED: 80% TREE COVERAGE + 1 ROW OF EVERGREEN SHRUBS
 842 LF - 96' LF (INGRESS/EGRESS) = 746'
 746 / 100 = 7.46
 "B" BUFFER: (1) CAT A TREE: 7.46 x 1 = 7.46 (8)
 (2) CAT B TREE: 7.46 x 2 = 14.92 (15)
 (1) CAT C TREE: 7.46 x 1 = 7.46 (8)
 PROVIDED: (8) CAT A TREES
 (15) CAT B TREES
 (8) CAT C TREES
 PLUS 1 ROW OF EVERGREEN HEDGES

WALL / FENCE LEGEND

- 3' WALL / SCREEN
- 6' FENCE
- 6' WALL



SCREENING, WALL, AND FENCE EXAMPLES

